

The Resource Connection

Engaging Families • Empowering Communities • Enriching Lives

Early Childhood Programs

Annual Report

2023 - 2024

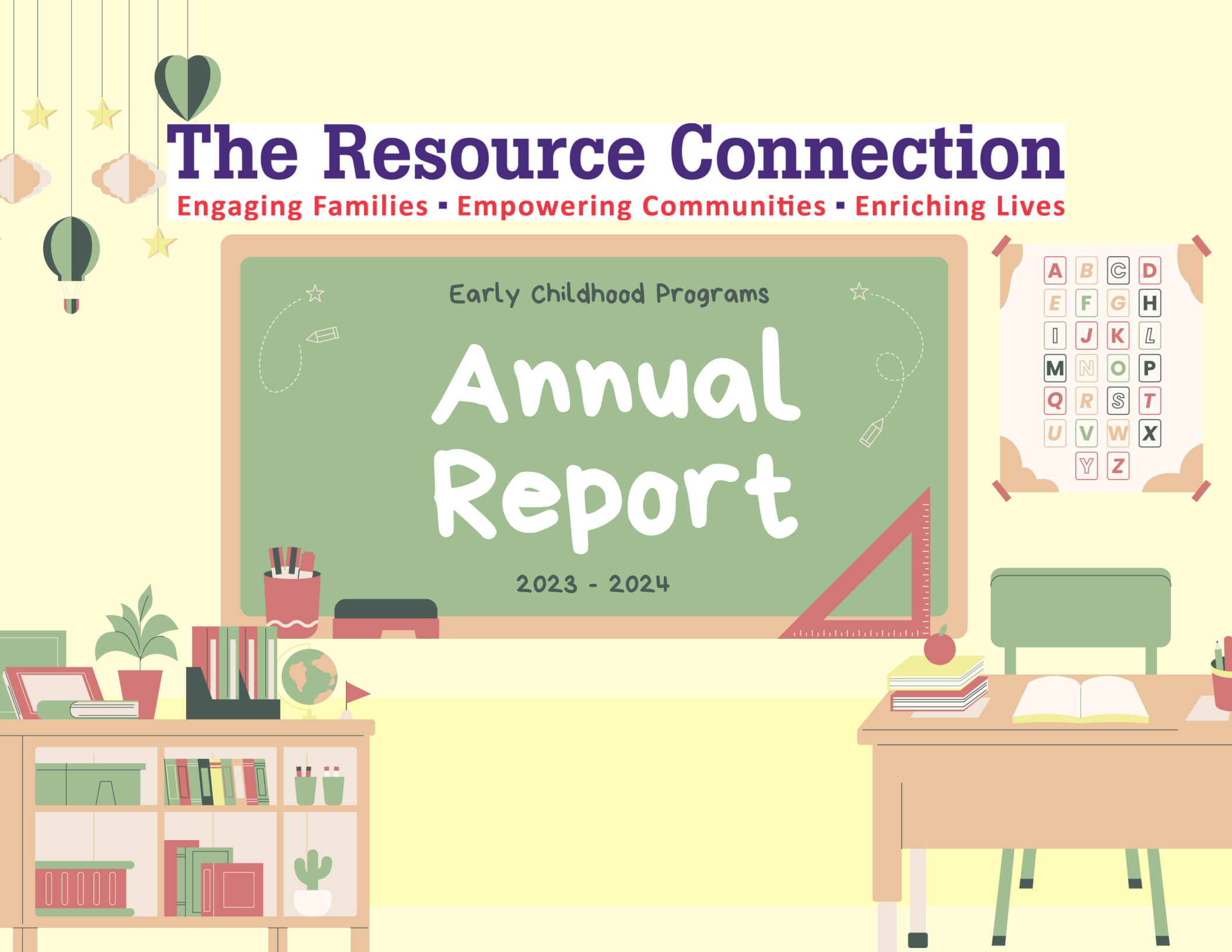




Table of Contents

3 --> who we are

4 --> where we serve

5 --> our scope of service

6 --> how we are funded

7 --> budget

8 --> who governs the program

9 --> the data

10 --> enrollment

11 --> household statistics

12 --> meals served

13 --> health checks

14 --> desired outcomes

15 --> school readiness goals

16 --> accountability



--Who We Are--

The Resource Connection's
Mission Statement:

Engaging Families
Empowering Communities
Enriching Lives

The Early Childhood Programs is a comprehensive program designed to meet the individual developmental and health needs of children ages 0-5 and their families.



The Resource Connection of
Amador & Calaveras Counties, Inc.
Early Childhood Programs
PO Box 919
San Andreas, CA 95249

Administrative Central Office
444 East Saint Charles St., Suite B
San Andreas, CA 95249

Monday – Friday
8:00am to 4:30pm
Closed for Lunch (12:00pm-12:30pm)

(209) 754-2000 Phone

(209) 754-4014 Fax

trcac.org/early-childhood-programs

--Where We Serve--

Eight Center-Based Facilities located throughout Calaveras County

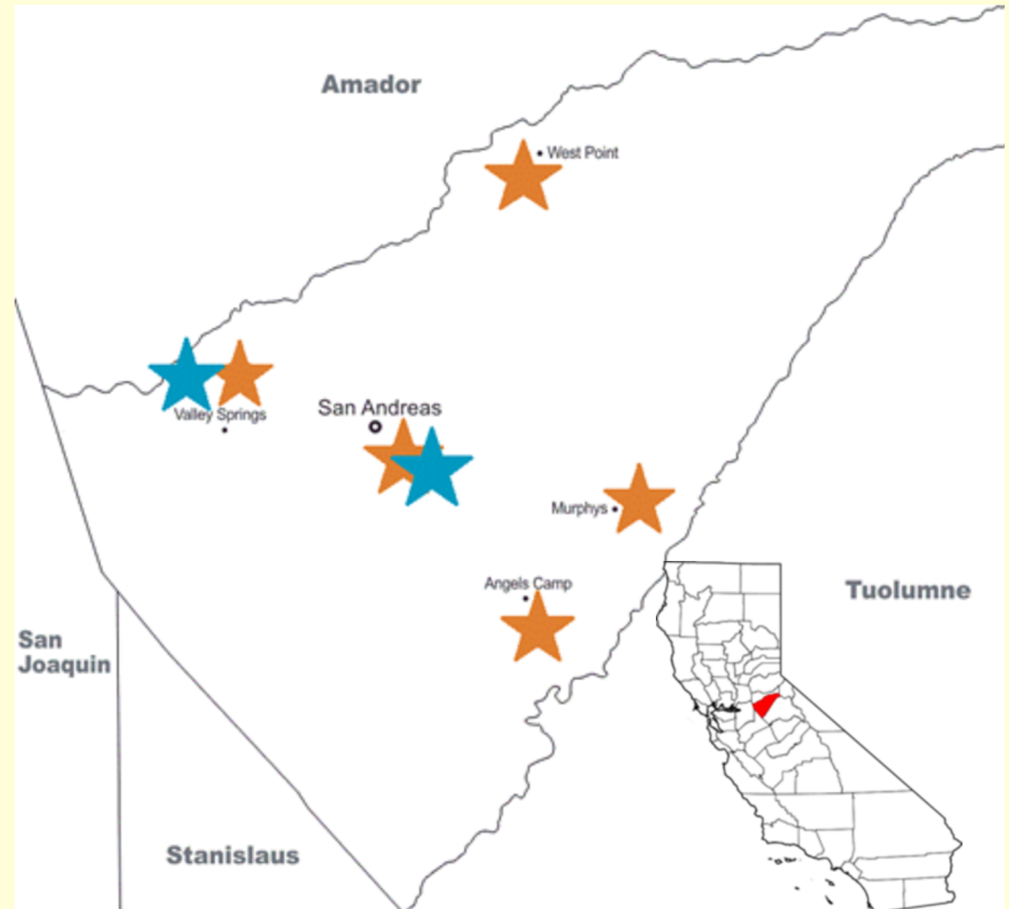
★ Six Preschools

- part-year & full-year programs

★ Two infant/toddler Care

- full-year program

As well as a home visiting program and administrative office.



__Our Scope of Service__



PREGNANCY SUPPORT & EDUCATION



HOME VISITING FOR INFANTS,
TODDLERS & PREGNANT WOMEN



CENTER-BASED INFANT &
TODDLER CARE






CENTER-BASED PRESCHOOLS &
SCHOOL READINESS
(PART & FULL YEAR OPTIONS
AVAILABLE)



HELP OBTAINING ONGOING,
ACCESSIBLE HEALTH & DENTAL
CARE

How We are Funded

	Head Start	Early Head Start	Child Care Food Program	Preschool Extended Day (West Point)
Annual Grant	\$1,699,891	\$1,640,572	\$117,000	\$44,000
Grantor	 U.S. Department of Health & Human Services		 CA Department of Education	 Calaveras County Office of Education
Fiscal Cycle	December - November		October - September	July - June



-- Budget --

FINANCIALS: DECEMBER - NOVEMBER

	PERSONNEL	ADMINISTRATION	OPERATING	IN-KIND
BUDGETED	\$2,600,078	\$260,853	\$463,450	\$849,072
EXPENSED	\$2,490,710	\$272,141	\$764,454	\$598,195

Who Governs Our Program

Parents of enrolled children in each program option (center- and home-based) plus a volunteer community member are responsible for the direction of the program at meetings held monthly.

2023-2024 Representatives

- Melissa Rynd
- Jazlyn Melendez
- Tatum Lowry
- Bryce Smahlik
- Kayla Glessman

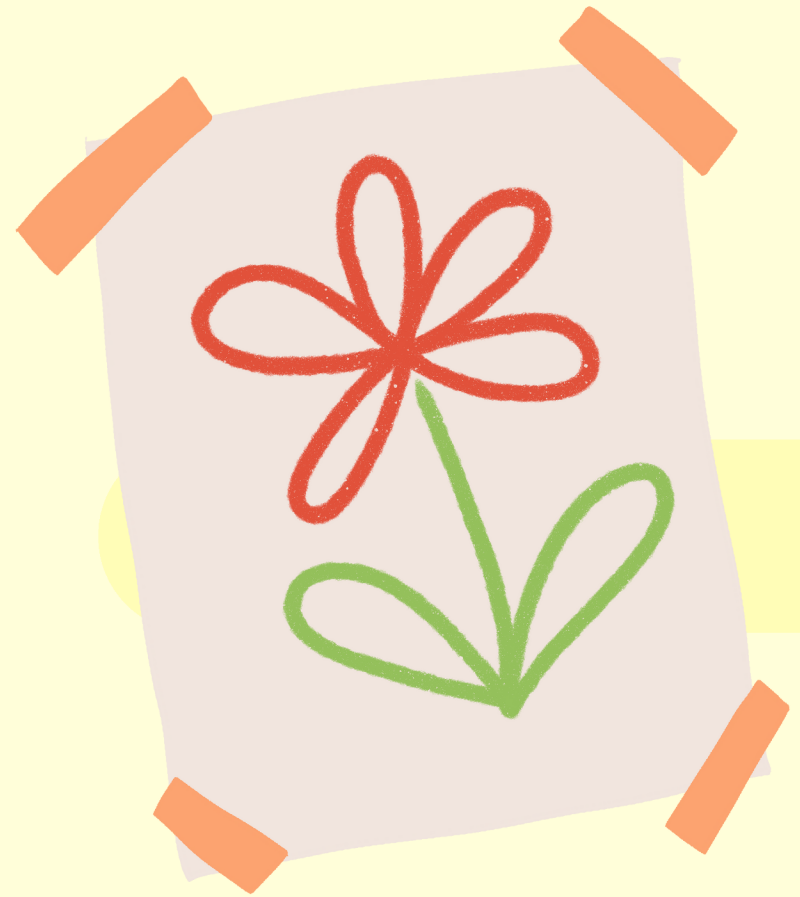


Community member volunteers meet monthly and are responsible for decisions related to program design and implementation.

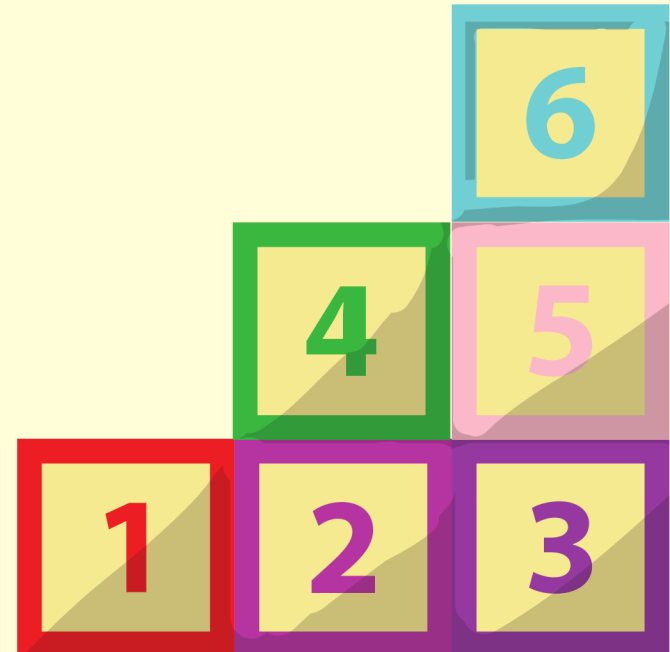
2023-2024 Members

- Dave Johnson
- Linda Mariani
- Gloria Miller
- Susan Hibbs
- Corissa Davidson
- Kathy Mazzaferro
- Lee Bergman
- Enendina Rivera
- Ed Lark





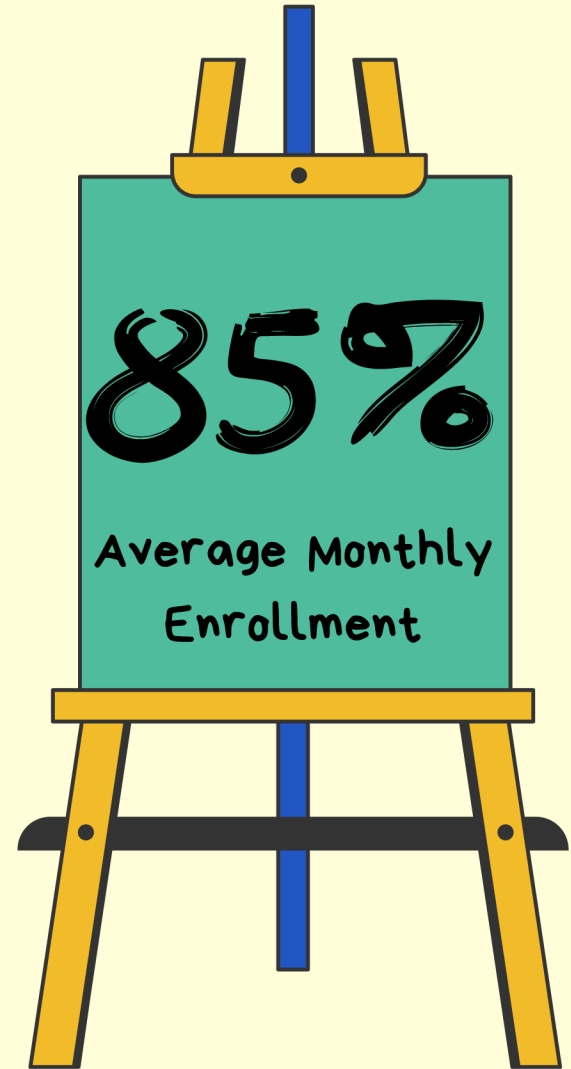
--The Data--



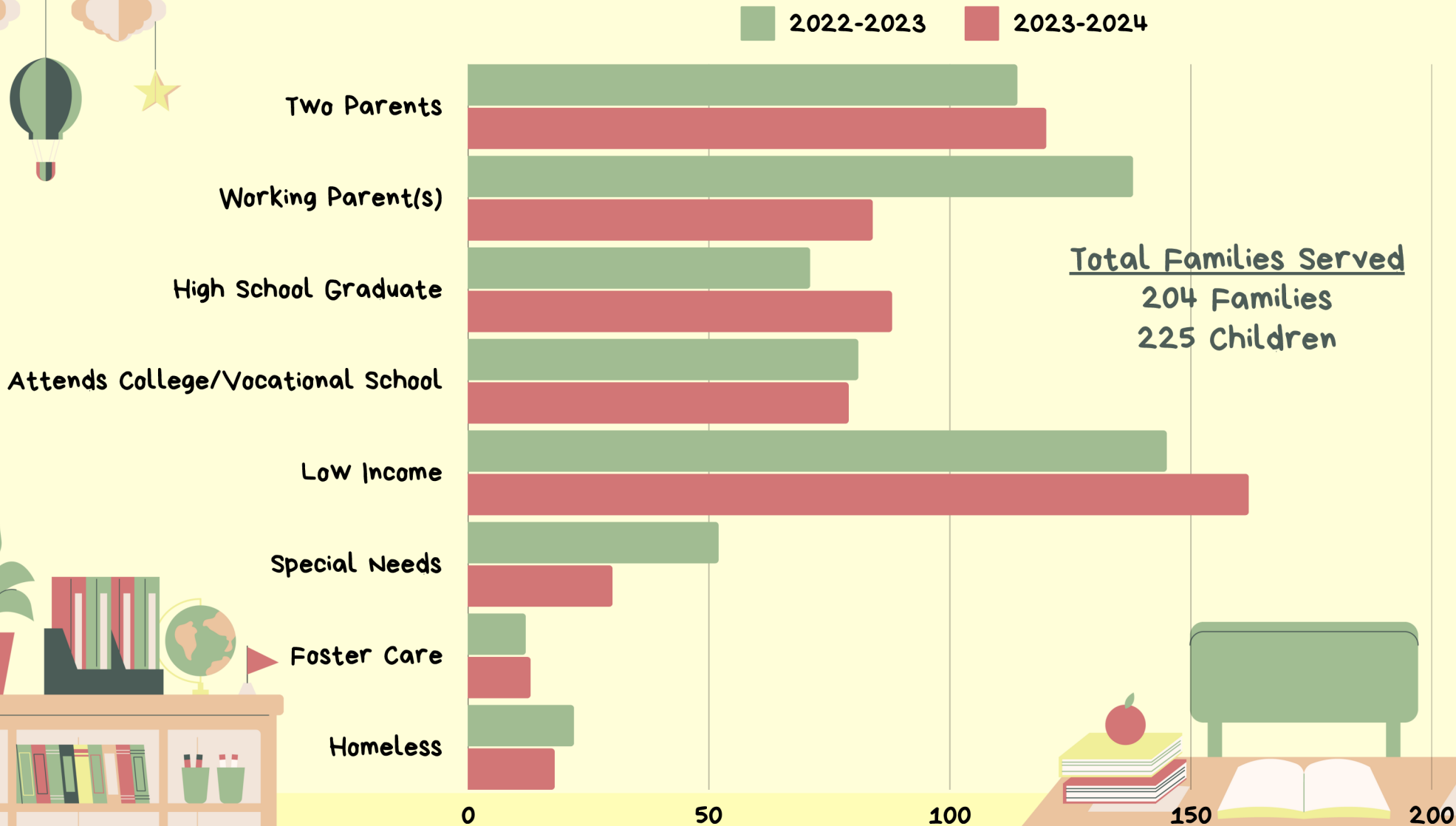
Enrollment



*Funded enrollment reduced from 89 to 58 in May of 2024.



Household Statistics



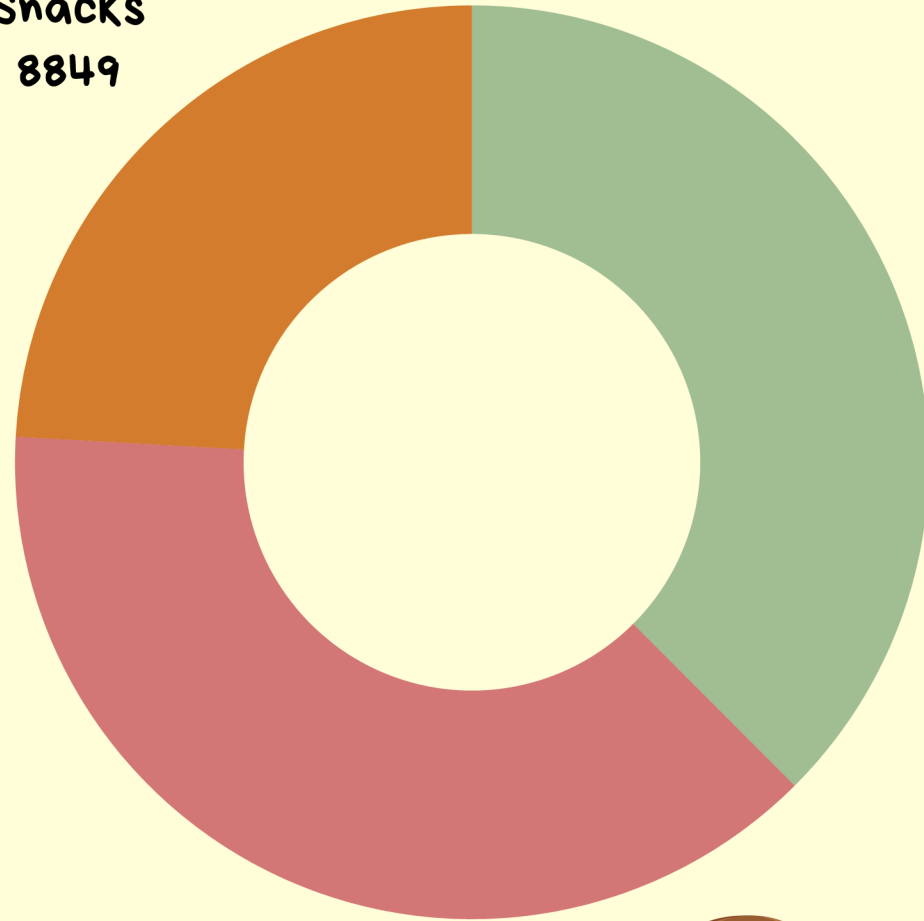
Meals Served

Funded by the State of California Department of Education Child Care Food Program (CCFP).

This institution is an equal opportunity provider.

Every child in a part- or full-day child care center is provided up to two-thirds of the child's daily nutritional needs, depending upon the length of the program day the child is attending.

Snacks
8849

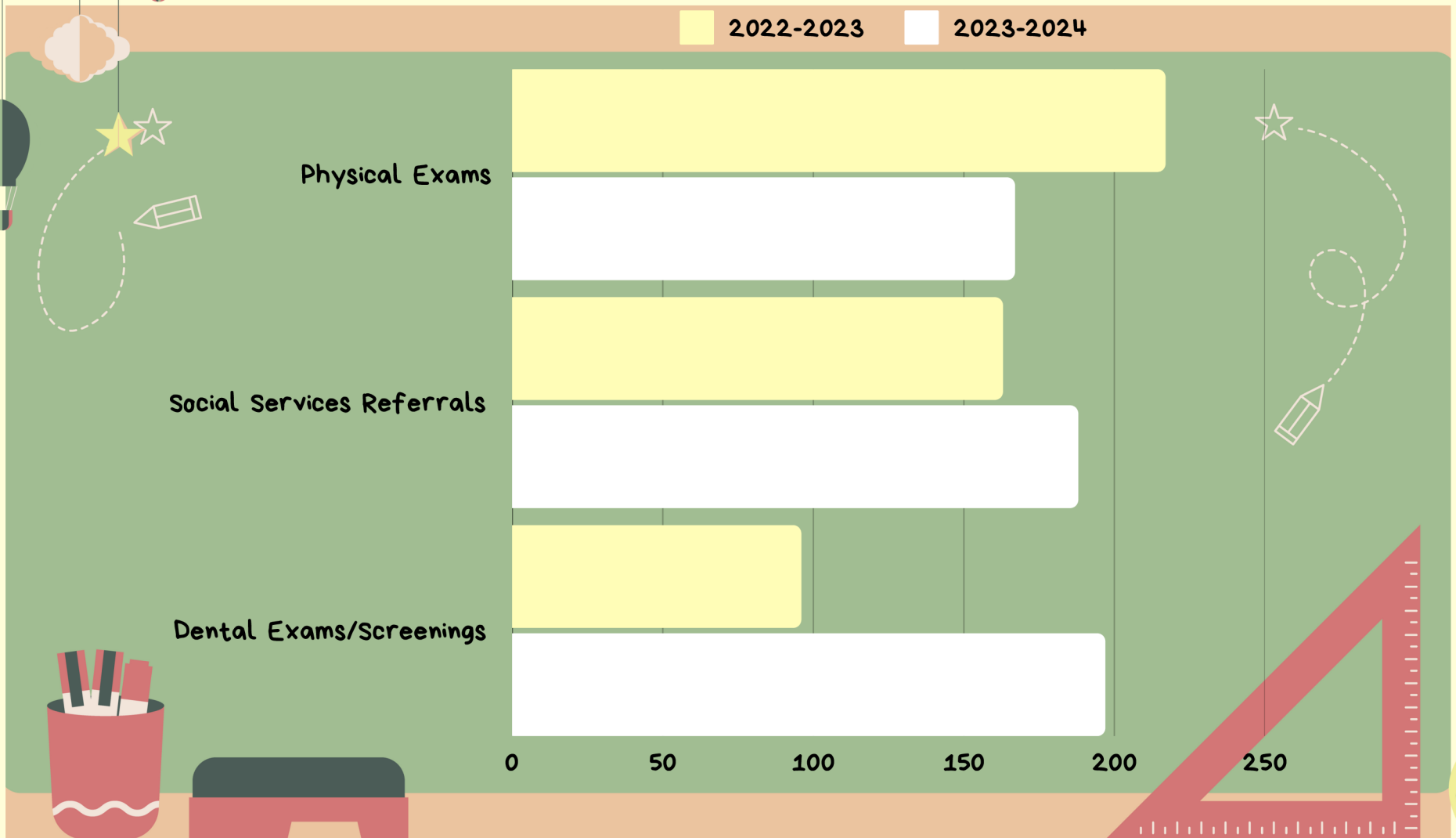


Breakfasts
13775

Lunches
14088



Health Checks



HELPING FAMILIES OBTAIN ONGOING AND ACCESSIBLE HEALTH AND DENTAL CARE.

COMPREHENSIVE HEALTH SERVICES ASSIST IN CHILDREN'S PHYSICAL, EMOTIONAL, COGNITIVE AND SOCIAL DEVELOPMENT.

Desired Outcomes

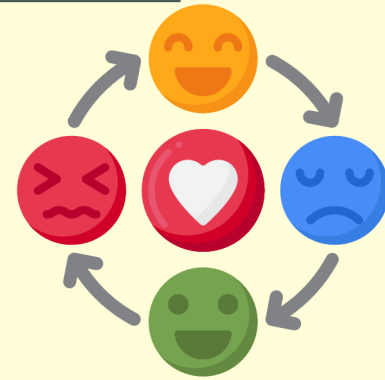
	CENTRAL DOMAINS				
	APPROACHES TO LEARNING	SOCIAL AND EMOTIONAL DEVELOPMENT	LANGUAGE AND LITERACY	COGNITION	PERCEPTUAL, MOTOR, AND PHYSICAL DEVELOPMENT
▲ INFANT/TODDLER DOMAINS	Approaches to Learning	Social and Emotional Development	Language and Communication	Cognition	Perceptual, Motor, and Physical Development
● PRESCHOOLER DOMAINS	Approaches to Learning	Social and Emotional Development	Language and Communication Literacy	Mathematics Development Scientific Reasoning	Perceptual, Motor, and Physical Development

- DRDP stands for “Desired Results Developmental Profile.” The DRDP is an assessment tool that teachers use to gather information to support children's learning and development.
- Results help identify the program's school readiness goals and addresses the five domains of the Head Start Early Learning Outcomes framework (shown above).
- Results are shared with families to help them engage in their children's learning and to help develop individual learning plans for each child in collaboration with their teacher(s).

School Readiness Goals



- SELF CONTROL OF FEELINGS & BEHAVIOR
- PHONOLOGICAL AWARENESS
- LETTER & WORD KNOWLEDGE
- NUMBER SENSE OF QUANTITY
- PATTERNING
- SAFETY
- SOCIAL & EMOTIONAL UNDERSTANDING





Accountability.

ADMINISTRATION FOR **CHILDREN & FAMILIES**

HEAD START OFFICE OF THE ADMINISTRATION FOR
CHILDREN & FAMILIES (ACF)

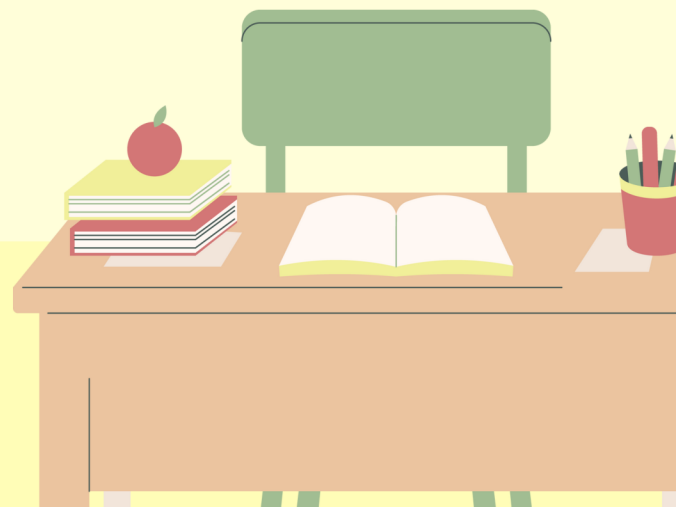
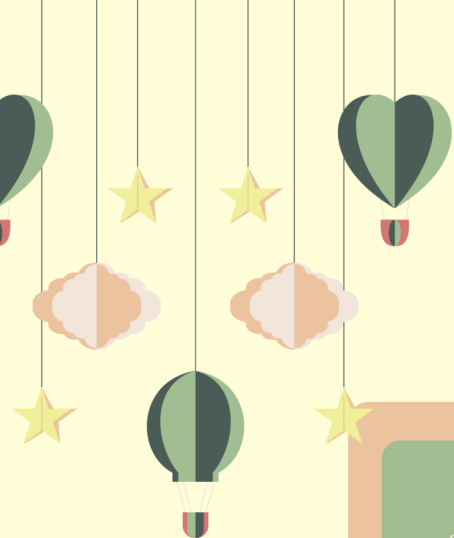
FOCUS AREA 1 REVIEW COMPLETED AND AWAITING
RESULTS

WIPFLI

CPAs and Consultants

Annual Independent External Auditing

For the fiscal year ending June 30, 2024 the audit team found no deficiencies, or questionable costs in the financial oversight, expenditures and/or program operations. A copy of the audit report is available on our website: [Trcac.org](https://trcac.org) > About us > Financials.



trcac.org

